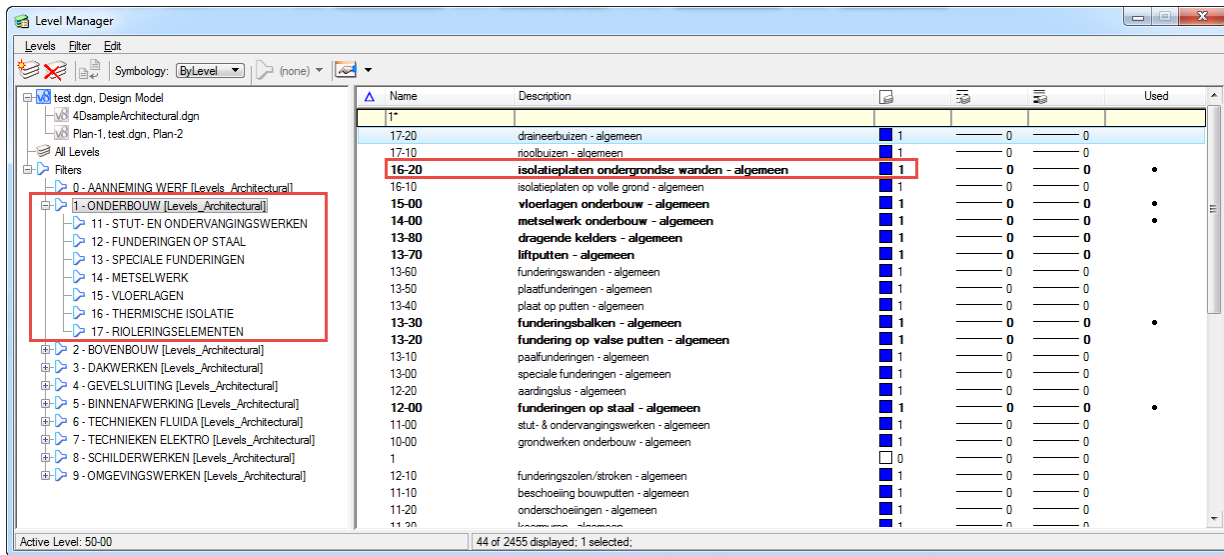
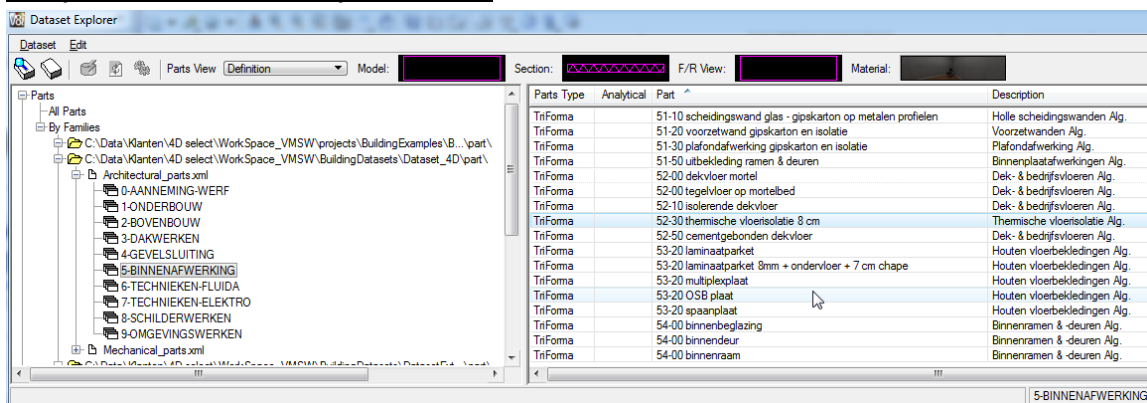


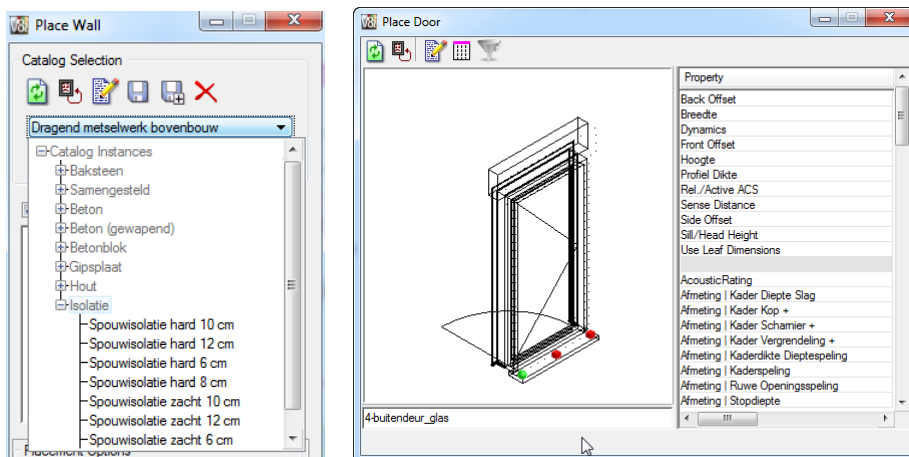
VMSW gebaseerde levels en level filters.



Components, Parts en Compound Parts.



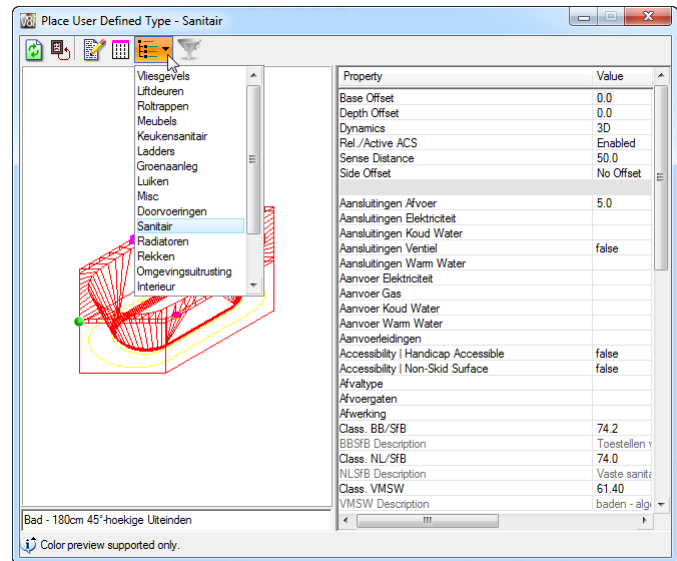
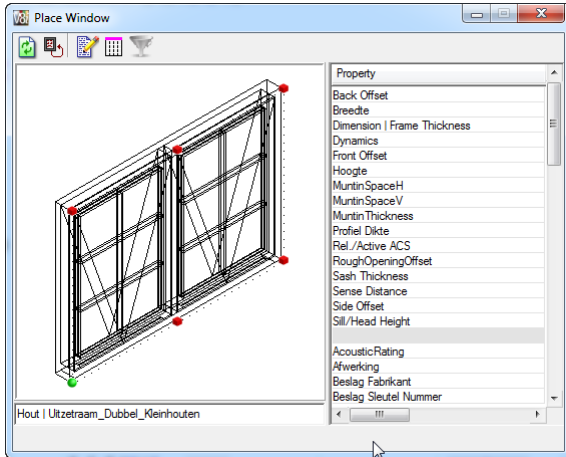
Uitgebreide Catalogi.



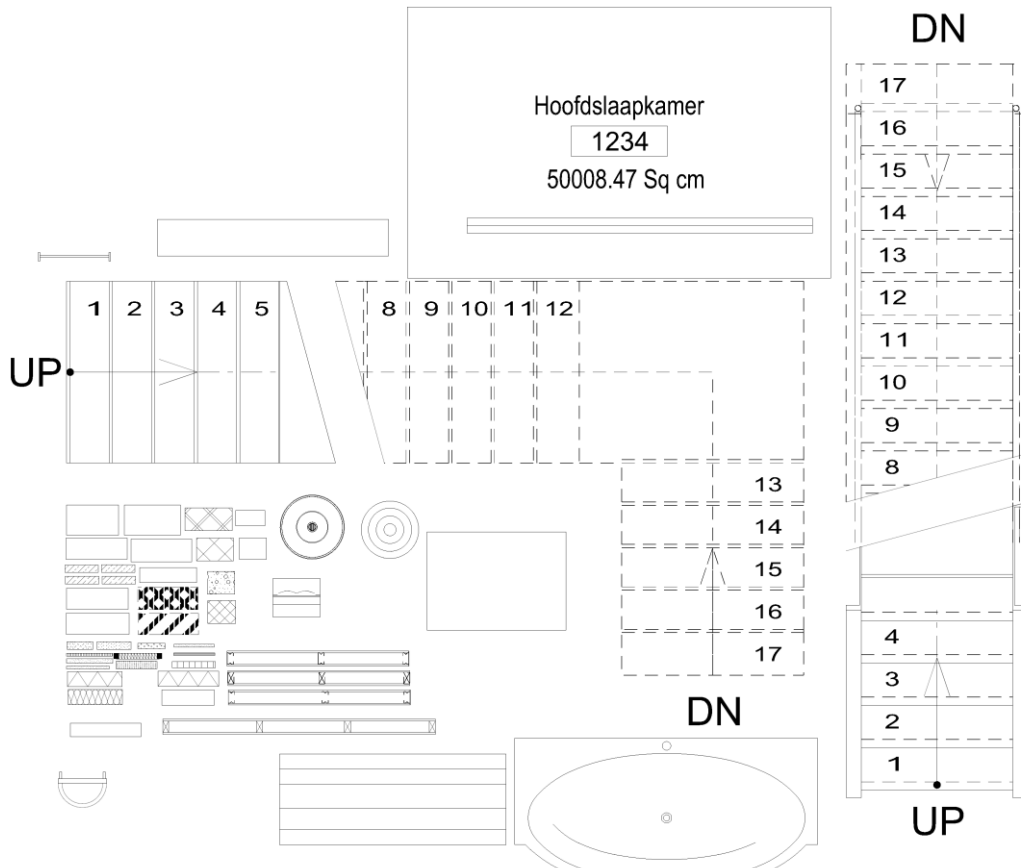
4D select nv

info@4dselect.be
www.4dselect.be

RPR Antwerpen
ON BE 0469 195 433
KBC 731-0098967-02



Arceringen

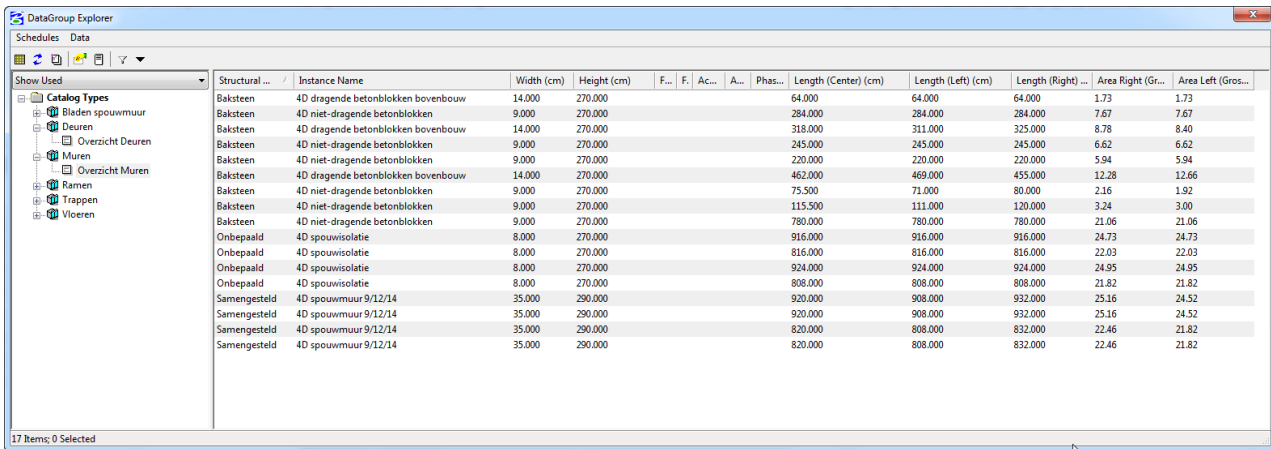


4D select nv

info@4dselect.be
www.4dselect.be

RPR Antwerpen
ON BE 0469 195 433
KBC 731-0098967-02

Layouts en Exell export.



| Structural ... | Instance Name | Width (cm) | Height (cm) | F... | F... | A... | Phas... | Length (Center) (cm) | Length (Left) (cm) | Length (Right)... | Area Right (Gr... | Area Left (Gros... |
|----------------|------------------------------------|------------|-------------|------|------|------|---------|----------------------|--------------------|-------------------|-------------------|--------------------|
| Baksteen | 4D dragende betonblokken bovenbouw | 14.000 | 270.000 | | | | | 64.000 | 64.000 | 64.000 | 1.73 | 1.73 |
| Baksteen | 4D niet-dragende betonblokken | 9.000 | 270.000 | | | | | 284.000 | 284.000 | 284.000 | 7.67 | 7.67 |
| Baksteen | 4D dragende betonblokken bovenbouw | 14.000 | 270.000 | | | | | 318.000 | 311.000 | 325.000 | 8.78 | 8.40 |
| Baksteen | 4D niet-dragende betonblokken | 9.000 | 270.000 | | | | | 245.000 | 245.000 | 245.000 | 6.62 | 6.62 |
| Baksteen | 4D niet-dragende betonblokken | 9.000 | 270.000 | | | | | 220.000 | 220.000 | 220.000 | 5.94 | 5.94 |
| Baksteen | 4D dragende betonblokken bovenbouw | 14.000 | 270.000 | | | | | 462.000 | 469.000 | 455.000 | 12.28 | 12.66 |
| Baksteen | 4D niet-dragende betonblokken | 9.000 | 270.000 | | | | | 75.500 | 71.000 | 80.000 | 2.16 | 1.92 |
| Baksteen | 4D niet-dragende betonblokken | 9.000 | 270.000 | | | | | 115.500 | 111.000 | 120.000 | 3.24 | 3.00 |
| Baksteen | 4D niet-dragende betonblokken | 9.000 | 270.000 | | | | | 780.000 | 780.000 | 780.000 | 21.06 | 21.06 |
| Onbepaald | 4D spouwisolatie | 8.000 | 270.000 | | | | | 916.000 | 916.000 | 916.000 | 24.73 | 24.73 |
| Onbepaald | 4D spouwisolatie | 8.000 | 270.000 | | | | | 816.000 | 816.000 | 816.000 | 22.03 | 22.03 |
| Onbepaald | 4D spouwisolatie | 8.000 | 270.000 | | | | | 924.000 | 924.000 | 924.000 | 24.95 | 24.95 |
| Onbepaald | 4D spouwisolatie | 8.000 | 270.000 | | | | | 808.000 | 808.000 | 808.000 | 21.82 | 21.82 |
| Samengesteld | 4D spouwwaam 9/12/14 | 35.000 | 290.000 | | | | | 920.000 | 908.000 | 932.000 | 25.16 | 24.52 |
| Samengesteld | 4D spouwwaam 9/12/14 | 35.000 | 290.000 | | | | | 820.000 | 808.000 | 832.000 | 22.46 | 21.82 |
| Samengesteld | 4D spouwwaam 9/12/14 | 35.000 | 290.000 | | | | | 820.000 | 808.000 | 832.000 | 22.46 | 21.82 |

| OVERZICHT MUREN | | | | | | | | | | | | | |
|-----------------|------------------------------------|------------|--------|--------|-----------|-----------|-----------|------|----------------|---------------|----------------|-------------|--------------|
| MATERIAAL | OMSCHRIJVING | AFMETINGEN | | BRAND | | AKOESTIEK | | FASE | HOEVEELHEDEN | | | | |
| | | DIKTE | HOOGTE | KLASSE | TEST REF. | KLASSE | TEST REF. | | LENGTE(CENTER) | LENGTE(LINKS) | LENGTE(RECHTS) | OPP.(LINKS) | OPP.(RECHTS) |
| Baksteen | 4D dragende betonblokken bovenbouw | 14 | 270 | | | | | | 64 | 64 | 64 | 1.73 | 1.73 |
| Baksteen | 4D niet-dragende betonblokken | 9 | 270 | | | | | | 284 | 284 | 284 | 7.67 | 7.67 |
| Baksteen | 4D dragende betonblokken bovenbouw | 14 | 270 | | | | | | 318 | 311 | 325 | 8.78 | 8.4 |
| Baksteen | 4D niet-dragende betonblokken | 9 | 270 | | | | | | 245 | 245 | 245 | 6.62 | 6.62 |
| Baksteen | 4D niet-dragende betonblokken | 9 | 270 | | | | | | 220 | 220 | 220 | 5.94 | 5.94 |
| Baksteen | 4D dragende betonblokken bovenbouw | 14 | 270 | | | | | | 462 | 469 | 455 | 12.28 | 12.66 |
| Baksteen | 4D niet-dragende betonblokken | 9 | 270 | | | | | | 75.5 | 71 | 80 | 2.16 | 1.92 |
| Baksteen | 4D niet-dragende betonblokken | 9 | 270 | | | | | | 115.5 | 111 | 120 | 3.24 | 3 |
| Baksteen | 4D niet-dragende betonblokken | 9 | 270 | | | | | | 780 | 780 | 780 | 21.06 | 21.06 |
| Onbepaald | 4D spouwisolatie | 8 | 270 | | | | | | 916 | 916 | 916 | 24.73 | 24.73 |
| Onbepaald | 4D spouwisolatie | 8 | 270 | | | | | | 816 | 816 | 816 | 22.03 | 22.03 |
| Onbepaald | 4D spouwisolatie | 8 | 270 | | | | | | 924 | 924 | 924 | 24.95 | 24.95 |
| Onbepaald | 4D spouwisolatie | 8 | 270 | | | | | | 808 | 808 | 808 | 21.82 | 21.82 |
| Samengest | 4D spouwwaam 9/12/14 | 35 | 290 | | | | | | 920 | 908 | 932 | 25.16 | 24.52 |
| Samengest | 4D spouwwaam 9/12/14 | 35 | 290 | | | | | | 820 | 808 | 832 | 22.46 | 21.82 |